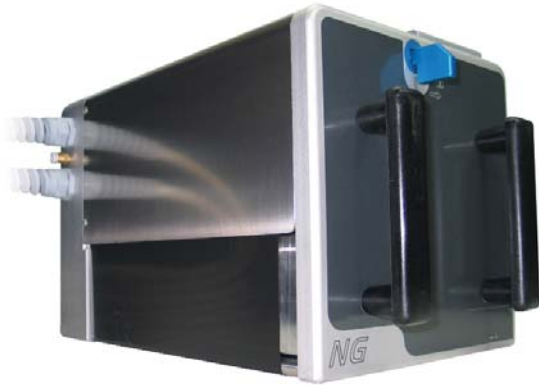


## Thermal Transfer Coding



## NG Series 6/8 Thermal Transfer Coder



The NG Series of large format thermal transfer coders were especially designed for printing large formats at optimised speeds and to be easily integrated into label applicators and packaging machines. The NG Series is suitable for printing fixed and variable text, data and graphics and can reproduce use-by dates, real time, batch codes, bar codes and much more. The NG Series have Ethernet cards fitted as standard and can be operated via a PC, touch screen or a:touch. The NG Series are specifically targeted towards chemical, agricultural and hardware manufacturers that may require large amounts of information to be applied to packaging/labels driven by requirements to reduce packaging footprint.

### Key Features

- **160mm x 100mm (NG6) and 213mm x 100mm (NG8) print areas (intermittent)**
- **Easy load ribbon cassette**
- **450m ribbon capacity**
- **Best-in-class 300dpi thermal print head**
- **Up to 300mm per second (NG6) and 250mm per second (NG8) print speeds (intermittent)**
- **Interchangeable printing mode (intermittent and continuous)**

### SPECIFICATIONS

<b>Print Area</b>	<b>NG6:</b> 160mm x 100mm (intermittent) 160mm x 1000mm (continuous) <b>NG8:</b> 213mm x 90mm (intermittent) 213mm x 1000mm (continuous)
<b>Resolution</b>	12 dots/mm (300dpi) horizontally and vertically
<b>Print Speed</b>	300mm/sec / 250mm/sec (intermittent)
<b>Performance Specification</b>	<b>NG6:</b> 200 prints/min (max) <b>NG8:</b> 150 prints/min (max)
<b>Thermal Ribbon</b>	160mm / 220mm x 450m (Inside wound) Cassette loaded
<b>Power Supply</b>	110V - 240V AC, 50/60Hz
<b>Air Supply</b>	2-5 bar (30-70 psi)
<b>Weight (printer)</b>	<b>NG6:</b> 11.6kg <b>NG8:</b> 14.2kg
<b>Dimensions</b>	<b>NG6:</b> 202mm W x 209mm H x 283mm D <b>NG8:</b> 202mm W x 209mm H x 339mm D
<b>Inputs</b>	Print signal, trigger signal, reset signal
<b>Outputs</b>	Ribbon end, inhibit, error warning, cassette open, low foil, print job readiness

### PROGRAMMING

<b>Text</b>	7 FONTS resident (scalable) Additional space for up to 50 customer supplied FONTS
<b>Fields</b>	Normal and obligatory text, Date/real time clock, Graphics images - BMP format, 0, 90, 180, 270 rotation, Extended date codes, Counters (up/down), Variable fields
<b>Barcodes</b>	EAN 8 & 13, CODE 39 & 128, ITF, Interleaved 2/5 (all internal) etc. GS1-128, GS1-DataMatrix, UPC-A, UPC-E EAN 128, CODE 32 & 93, Codabar, Industrial 2/5 and others via software
<b>Communications</b>	RS-232, Ethernet, USB
<b>Pc Programmes</b>	a:design, Codesoft or AllenCraft under Windows-printer driver (optional). Remote panel 2 and a:touch

